



# CRAFT, DESIGN & TECHNOLOGY



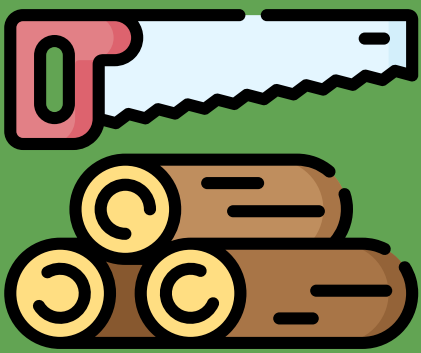
[@FHS\\_CDT\\_HE](#)



In the Craft, Design and Technology Department you can study a range of subjects that allow you to develop your practical and creative skills across a range of different areas, working with various different media and materials. Currently in CDT you can study Graphic Communication through to Higher and Practical Woodworking and Engineering Skills through to National 5 level.

## GRAPHIC COMMUNICATION

The Graphic Communication course is practical, exploratory and experiential in nature. It combines elements of creativity and communicating for visual impact with elements of protocol and an appreciation of the importance of graphic communication standards. This course is appropriate for young people who are interested in the Engineering, Construction and Design sectors of further education or employment.



## PRACTICAL WOODWORK

The Practical Woodworking Course provides opportunities for learners to gain a range of practical woodworking skills and to use a variety of tools, equipment and materials. This course is appropriate for young people with an interest in the Trades based and Construction sectors of further education or employment.

## ENGINEERING SKILLS

This course allows learners to experience across four areas of Engineering: Mechanical, Electrical, Fabrication, Manufacture and Assembly. In each of the areas learners will develop practical skills and abilities. This course is ideal for those interested in the Engineering sector of employment.



## CAREER PATHWAYS

Construction  
Engineering  
Graphic Design  
Product Design  
Joinery  
Plumbing

Architecture  
Surveying  
Cabinet Making  
Shop Fitting  
Automotive  
Social Media Design

[More information is available here within our Senior School Course Choice Booklet](#)

[Construction and the built environment Engineering](#)

[SQA information on Graphic Communication](#)

[SQA information on Practical Woodworking](#)

[SQA information on Engineering Skills](#)

