

12 JANUARY 2023

## NEWS & OPPORTUNITIES IN NW EDINBURGH



# How to recycle your Christmas tree



FIND OUT WHEN WE'RE COLLECTING CHRISTMAS TREES IN YOUR AREA



<https://www.edinburgh.gov.uk/directory/10241/christmas-tree-collections-2023>

## Edinburgh opens city-wide network of 'Warm and Welcoming Spaces'

# Edinburgh's warm *and* welcoming spaces



Council venues such as libraries, community centres, museums and galleries, alongside partner and community spaces, will put on free activities for a variety of age groups and provide a space where people feel safe, warm, and at ease.

In certain spaces residents will be able to access information to help alleviate food/fuel poverty and other support available to them.

At this stage, we have more than 60 Warm and Welcoming Spaces and counting across the city. We're also working with a network of partners to provide and promote further spaces. Residents will be able to find out more about the initiative and find their nearest 'Warm and Welcoming Spaces' via an interactive map on our [warm and welcoming spaces webpage](#).

Please also visit our dedicated [home energy page](#) for advice on how to keep your homes warmer, save money or if you're worried about your bills.

If you are an organisation and want to get involved in Warm and Welcoming, please email us on [warm.welcoming@edinburgh.gov.uk](mailto:warm.welcoming@edinburgh.gov.uk)



# ACE IT

Helping people over 50 access  
the digital world

**Do you need help with your  
laptop, phone or tablet?**



**Our FREE one-to-one IT  
coaching sessions for over  
50s could be for you!**

تدريب مجاني على مهارات الكمبيوتر و الأجهزة الرقمية لكبار السن  
वृद्ध लोगों के लिए निःशुल्क डिजिटल कौशल प्रशिक्षण  
Безкоштовний коучинг цифрових навичок для літніх  
людей

为老年人提供免费数字技能指导  
為長者提供免費嘅數碼技能輔導

## We can help with:

- Online banking
- Video calling
- Grocery shopping
- Smartphones
- Prescriptions
- Tablets
- Emails
- Word, Excel, Powerpoint
- Social media
- And much more!

**Call 0131 667 2053 or email [info@aceit.org.uk](mailto:info@aceit.org.uk) to book an appointment at our Nicolson Square offices with one of our friendly volunteers.**



ACE IT Scotland



@aceitscotland



@aceitscotland



25 Nicolson Square,  
Edinburgh, EH8 9BX



<https://aceit.org.uk/>



[info@aceit.org.uk](mailto:info@aceit.org.uk)



*Together Almond & Western VSF helps*

**WALK-IN WARM SPACES OPEN THROUGHOUT  
WINTER IN YOUR COMMUNITY**

# **WARM PLACES**



## **BRINGING PEOPLE TOGETHER**

**Charge your phone - Have a Coffee or Soup  
Play Puzzles / Cards - Chat - Read - Relax**

**Voluntary Sector Warm Places Activities  
Programme in the West Edinburgh Area**

**<https://facebook.com/awe.voluntary.sector>**



### **Rannoch Community Centre - - 6 Rannoch Terrace, EH4 7ES - 0131 339 5351**

Community Cafe at Rannoch Community Centre - Every Tuesday afternoon 3.30pm - 5pm. This is planned to run on Jan 10th, Jan 17th and Jan 24th. This drop-in is FREE and provides families the opportunity to come along to meet others, relax, chat and enjoy a meal. Please phone 0131-339-5351 please email [CLD-Rannoch@ea.edin.sch.uk](mailto:CLD-Rannoch@ea.edin.sch.uk)

### **Munro Centre – 6 Parkgrove Street – EH4 7RN - 0131-539 7179**

Munro Community Centre - 6 Parkgrove Street, EH4 7RN 0131 539 7179. We are be open Every Monday and Tuesday from 10.00 am until 12.00. Free tea and coffee with a biscuit. Access to our free library and a cosy chat. All are welcome

### **Dower House Café – St Margaret’s Park - Open Tuesday to Sunday 8.30am 4pm**

The Dower House Café and The Corstorphine Trust have opened extra space in the Dower House to welcome anyone in the community who may have concerns about the rising cost of energy bills. We have a fund available for customers to access hot food and drink on the house and options available for customers to donate to the fund.

### **Drumbrae and Corstorphine Libraries**

Our local libraries are part of Edinburgh’s Warm and Welcoming Spaces this winter which also includes other spaces such as community centres and community projects, places of worship and cultural venues. In addition to this, The City of Edinburgh Council has been working with a wide range of partners and has created a number of useful links to practical advice and support on the Council’s website. To find out more, open the QR code below.

Visiting both **Corstorphine and Drumbrae Libraries**, you can **browse and borrow books, return your books, pick up free sanitary products, use the photocopier, collect hearing aid batteries, use a public computer and print, apply for a National Entitlement Card (bus pass).**

#### **Drumbrae Library Hub: 0131 529 5244**

##### **Opening hours**

Monday: 10am to 8pm  
Tuesday: 10am to 8pm  
Wednesday: 10am to 8pm  
Thursday: 10am to 5pm  
Friday: 10am to 5pm  
Saturday: 10am to 5pm

#### **Corstorphine Library 0131 529 5506**

##### **Opening hours**

Monday: 1pm to 8pm  
Tuesday: 10am to 5pm  
Wednesday: 1pm to 8pm  
Thursday: 10am to 5pm  
Friday: 10am to 5pm  
Saturday: 10am to 5pm

### **Energize Health and Fitness – 3 Lochside Place Edinburgh Park EH12 9DF - 0131 317 0260**

Warm communal area serving teas and coffees with shower amenities available to anyone in the community who may have concerns about the rising cost of energy bills.

### **Memory Lane Café - Saughtonhall United Reformed Church - 85/87 Saughtonhall Drive, EH12 5TR. 07881 288909**

The Memory Lane Cafe meets every Friday from 10am – 12pm at Join us for conversation and home baking. A warm welcome awaits. Club closed from 16<sup>th</sup> Dec – 13<sup>th</sup> January. Want to know more? - Call Lesley on 07881 288909

### **St Anne’s Church - 1 Kaimes Road - EH12 6JR - 0131 316 4740**

Lunch Club Starting on 16<sup>th</sup> November, St Anne’s are running a lunch club on Wednesdays 12 noon-3.30pm, offering a simple lunch (soup/rolls), and tea/coffee, for folk who may be feeling the cold/needing company over the next months. We will see how it goes, but will possibly have a few 'activities' (books/jigsaws/papers etc) available.

### **St Kentigern's Church - 26-28 Parkgrove Avenue, Clermiston, EH4 7QR - 0131 334 1693**

A warm welcome awaits you at St Kentigern's Church Thursdays 10.00am -12.00pm. A snug place to chat, read, knit, play table games, all with a nice cup of something warm.

**St. Ninian's Church – 144 St John's Road – EH12 8AY 0131 316 4777**

**Cosy Corner** - feeling Cold - We are running Cosy Corner in the Beith Hall (access from St. John's Road), from 10:00am - 1:00pm on Mondays, Tuesdays and Thursdays. Come in and enjoy a warm room, warm welcome and a warm drink.

**'Coffee Plus' - St Thomas' Church, 75-79 Glasgow Road, EH12 8LJ –**

10am-12pm every Thursday. Everyone is very welcome to enjoy free tea, coffee, cakes, and crafts. Call 07411 236 433 for more details.



**Corstorphine Community Centre**

**'Corstorphine Community Centre – 5 Kirk Loan EH12 7HD - Feeling the Chill -** Wanting to escape the rain? Come In from the cold and Coorie in with a cuppa at our cosy book nook & jigsaw corner. Or get involved with any of the groups in our programme of activities. General Enquiries - e-mail [admin@ccchub.online](mailto:admin@ccchub.online) Tel:07786 870297 or visit our website [www.corstorphinecommunitycentre.org.uk](http://www.corstorphinecommunitycentre.org.uk) for further information



A&WVSF QR



#wellbeingwedwestedin



CEC QR

Supporting our community to improve physical and mental wellbeing.

Watch out for wonderful Facebook posts from Local Groups.

Please Note Some activities in this leaflet may make a small charge to cover costs

For any further information on any of the individual organisations please contact them directly.

For other information on what is available please contact Tommy - [tommyyawvsf@gmail.com](mailto:tommyyawvsf@gmail.com)

The information contained in this leaflet was correct at the time of going to print. However it may be necessary to make changes to the programme at a later date.

Before attending any of the sessions it would be advisable to phone the provider to check the current information.

- Published by A&WVSF
- Project Funded by CEC

♦ **EDINBURGH** ♦  
THE CITY OF EDINBURGH COUNCIL



## South Queensferry Provision

# Warm Welcome

**We all will be affected in some way by rising fuel prices and may want a bit of help/advice this winter**

There will be several places open in the area for a wee bit warmth. This timetable will be regularly updated and displayed in Rosebery hall, Queensferry library and Queensferry and Dalmeny churches as well as online as more venues are identified.

	Monday	Tuesday	Wednesday	Thursday	Friday	Saturday	Sunday
Morning	QPC Connections 10-2 (starts 31/10)	QL 10-5 DAL 10-2 Tea and tots, café	Mens shed community centre 10.30 -2.30 QPC 10-2:00	QL 10-5 Priory church 10-3 DAL 10-2 cafe	QL 10-5 DAL 10-12, café	QL 10-5	QPC 9.30-12 DAL11-1 Priory 10- 12
Afternoon	Connections QL 2-8	Library-5 DAL -2	QL 1-8 Mens shed -2.30	Library	Library	Library	
Evening	Library		Library				

Key QPC =Queensferry Parish church, DAL = Dalmeny Parish church hall QL= Queensferry Library



**More info  
available here**



# Stress and anger: course for unpaid carers



**This three week course will explore different tools and strategies that you can use to manage feelings of stress, anger and frustration.**

**Start:** Monday 13 February

**When:** 6:00pm - 8:00pm

**Where:** Craigmillar Library, 101 Niddrie Mains Rd, Edinburgh EH16 4DS

**Contact us for more information and to book a place:**

**Make an enquiry: [www.health-in-mind.org.uk](http://www.health-in-mind.org.uk)**

**Call: 0131 225 8508 (Ask for Paulina)**

**[www.health-in-mind.org.uk](http://www.health-in-mind.org.uk)**



We're part of the  
**Carewell Health  
& Wellbeing  
Partnership**



Health in Mind is a charity registered in Scotland, number SC004128, and a company limited by guarantee, registered in Scotland, number SC124090. The registered office is at 40 Shandwick Place, Edinburgh, EH2 4RT



# Emotional Wellbeing for unpaid carers



**4 week course for unpaid carers to learn  
about their emotions and ways to  
manage them**



**Start: Wednesday 1 February**

**Time: 1.00-2:30pm**

**Where: Eric Liddell Community, 15 Morningside  
Rd, Edinburgh EH10 4DP**

Contact us for more information and to book a  
place:

Make an enquiry: [www.health-in-mind.org.uk](http://www.health-in-mind.org.uk)

Call: 0131 225 8508 (Ask for Paulina)

**[www.health-in-mind.org.uk](http://www.health-in-mind.org.uk)**



We're part of the  
**Carewell Health  
& Wellbeing  
Partnership**



Health in Mind is a charity registered in Scotland, number SC004128, and a company limited by guarantee, registered in Scotland, number SC124090. The registered office is at 40 Shandwick Place, Edinburgh EH2 4RT

# Boundaries - course for unpaid carers



**This four week course will help you learn how to set up healthy boundaries with your family, friends or the person you care for.**



**Start:** Monday 6 March

**Time:** 2:00pm - 4:00pm

**Where:** Health in Mind, 40 Shandwick Pl, Edinburgh EH2 4RT

**Contact us for more information and to book a place:**

**Make an enquiry:** [www.health-in-mind.org.uk](http://www.health-in-mind.org.uk)

**Call:** 0131 225 8508 (Ask for Paulina)

**[www.health-in-mind.org.uk](http://www.health-in-mind.org.uk)**



We're part of the  
**Carewell Health  
& Wellbeing  
Partnership**



Health in Mind is a charity registered in Scotland, number SC004128, and a company limited by guarantee, registered in Scotland, number SC124090. The registered office is at 40 Shandwick Place, Edinburgh EH2 4RT

# Do you care for someone with dementia?



Newington Library



## Join us to:

- talk about how you are feeling
- get peer support from other carers
- share and listen

**When:** second Friday of every month

**Start:** Friday 13 January, 10:15-11:15am

**Where:** Newington Library

Contact Paulina to find out more and book a place:

e: [paulina.szach@health-in-mind.org.uk](mailto:paulina.szach@health-in-mind.org.uk)

p: 0131 225 8508 (ask for Paulina)

[www.health-in-mind.org.uk](http://www.health-in-mind.org.uk)



We're part of the  
**Carewell Health  
& Wellbeing  
Partnership**



Health in Mind is a charity registered in Scotland, number SC004128, and a company limited by guarantee, registered in Scotland, number SC124090. The registered office is at 40 Shandwick Place, Edinburgh EH2 4RT



# Help, just when you need it!



Volunteer Edinburgh are aiding people by offering volunteers to assist with practical tasks with a time-limited approach through our team of 400+ ready and willing Community Taskforce Volunteers.

## **What occasional and time-limited tasks can we help with?**

We have fantastic success in going on shopping trips with a shopping list for people that cannot go to the shops to buy for themselves\*. Often the volunteers can be found in the supermarket of choice for the individual(s) needing our help. We happily accompany people on an unaided walk for fresh air.

We also support after-hospital discharge, prescription collection and deliveries, help with light waste management (i.e., Taking bin bags to the street or recycling), walking dogs on a short-term basis, tidying gardens, going to the Post Office to mail items etc., 10-minute doorstep chat and meeting people at an appointment.

## **How do you get in contact with us?**

Visit our website and complete an online form <https://actionforhelp.co.uk/ve/>

Email us [taskforce@volunteeredinburgh.org.uk](mailto:taskforce@volunteeredinburgh.org.uk)

Call us at 0131 561 8309 or 07958 540438



Update January 2023

Issue #15

Welcome to the first [Granton Waterfront](#) newsletter of 2023. In this issue, we'll bring you updates on upcoming events and developments in your area.

## Granton Gasholder Restoration

[back to top](#)

Work has begun to transform the iconic Granton gasholder into an exciting public space

*Illustrative visual of Granton Gasholder © Tetra Tech*

Restoration work has begun on the iconic gasholder, which sits at the heart of a planned new sustainable coastal town at Granton Waterfront.

The City of Edinburgh Council has appointed McLaughlin & Harvey Limited to carry out the work, which started this month and is due for completion in 2024.

The future vision for the space within the restored gasholder is to have multi-sensory play zones, a dedicated space for permanent and temporary public art, relaxation area, outdoor trails and tracks for exercise, as well as using a large outdoor space for sports, markets, seasonal events, community use, festivals, performance arts, exhibitions and play. Work will also be carried out to plant trees, shrubs and wildflowers improving biodiversity and local habitat in the area.



## North Edinburgh Film Festival

[back to top](#)

# NORTH EDINBURGH FILM FESTIVAL

CELEBRATE NORTH EDINBURGH THROUGH FILM

SATURDAY 28TH JANUARY 2023

2PM - 5PM

WEST PILTON NEIGHBOURHOOD CENTRE

19 W Pilton Grove, EH4 4BY

Celebrate North Edinburgh through film on Saturday 28 January at the West Pilton Neighbourhood Centre

In partnership with the North Edinburgh Community

Festival, North Edinburgh Arts, and West Pilton Neighbourhood Centre, the first event of **North Edinburgh Film Festival** takes place Saturday 28th January with an afternoon focused on documentary, experimental film, and Pilton Video archive films.

**When:** Saturday 28th of January 2023, 2PM-5PM.

**Where:** West Pilton Neighbourhood Centre (19 W Pilton Grove, EH4 4BY)

Find out more here on the [Screen Education Edinburgh website](#).

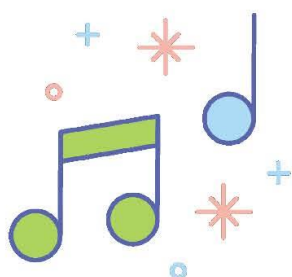


# Tea Dance

**Saturday 28 January, 2 - 4pm**  
**The Corstorphine Astoria Centre**  
**18 Kirk Loan**

**Tickets £3 - includes tea, coffee, a light sandwich and a sweet treat.**

Please buy tickets in advance  
from Corstorphine Community  
Centre, 5 Kirk Loan  
Mon - Fri 10am to 3pm





[Forward this e-newsletter](#)

[View this e-newsletter in your browser](#)



## BLOGS

[OSCR: How much do you need in Charity Reserves Blog](#)

## CONSULTATIONS & SURVEYS

[Help Build a Picture of Support For Unpaid Carers in Edinburgh](#)

## EVENTS

[Community Climate Action Planning in Edinburgh](#)  
(15 Jan)

[Cosying Our Buildings For Good](#) (26 Jan)

[Holistic Whole Family Support Conference: Policy Into Practice](#) (8 Feb)

## FUNDING

[CMHW Fund Year 2 Update](#)

[Edinburgh Community Climate Fund](#)

[South Queensferry & North West Edinburgh Funding Opportunity](#)

## SUPPORT & TRAINING

[Adult Support & Protection Level 2](#)

[Free Governance Training](#)

[Other Training Opportunities for 2023](#)

## EVOC SUPPORT

We are here to offer help and support to community and voluntary organisations across Edinburgh.

This includes a range of opportunities:

- [Development & training opportunities](#)
- [Events, seminars and workshops](#)
- [FREE governance and fundraising courses](#)
- [Membership benefits](#)
- [Projects & Partnerships](#)
- [Red Book Directory](#)
- [Tailored organisational support](#)
- Themed forums and networks:
  - [Community Link Worker Network](#)
  - [Carers Forum](#)
  - [Children, Young People & Families Network](#)
  - [Disability Forum](#)
  - [Health Walk Network](#)
  - [Mental Health Forum](#)
  - [Older People's Service Providers' Forum](#)
  - [Small Area Networks](#)
  - [Substance Use Network Edinburgh](#)
  - [Voluntary Sector Forums](#)

**JOIN  
OUR TEAM**

We're looking for enthusiastic and passionate people to help us support the community and voluntary sector in Edinburgh...

# FUNDING, VACANCIES & OPPORTUNITIES



[Download](#)

Today (13 January), the Edinburgh Community Climate Fund (ECCF), officially opened to applications from local groups across the city.

The initiative is designed to support the delivery of the Council's climate change targets together with providing learning to inform the wider approach to participatory budgeting (PB). Participatory budgeting is a way for citizens to have a direct say on how money is spent. In Edinburgh, PB has been used as an approach to distribute funding since 2010.

The [Edinburgh PB Framework](#) was approved in 2021 which included a commitment to a number of PB initiatives including the ECCF.

The ECCF provides £100,000 of one-off funding which is available for local groups to undertake projects which align with the objectives of the Edinburgh Climate Strategy and goal of becoming a net-zero city by 2030. Groups can apply for up to £20,000 worth of funding, providing that the activities can be delivered within 12 months, do not replicate or replace a Council service, and are in line with at least one of the project's aims.

Applications are open until midnight on 12 February. The final projects will then be shortlisted and put to a public vote. We hope to announce the results of the ECCF in mid-March.

To apply please visit the [Your Voice webpage](#) where you can download an application form. Completed forms should be emailed to:

[communityplanning@edinburgh.gov.uk](mailto:communityplanning@edinburgh.gov.uk)

For more information, please visit our [Participatory Budgeting and the ECCF webpage](#).

There will be an in-person Application Support Drop-In at the City Chambers on 23 January between 10.00am-12 noon and 1.00pm-3.00pm.

There will also be two online information sessions on 24 January between 6.30pm-7.30pm and 26 January from 10.00am-11.00am.  
For further information or to book a place at these sessions please email:  
[communityplanning@edinburgh.gov.uk](mailto:communityplanning@edinburgh.gov.uk)

Criteria for the ECCF are set out below:

- Creating opportunities for community leadership and learning on climate change.
- Reducing greenhouse gas emissions within communities and contributing to the net-zero agenda for Edinburgh.
- Generating sustainable projects for the benefit of local people to build resilience or adapt to climate change within communities.
- Building relationships between neighbourhoods of different socio-economic and ethnic backgrounds to work together on just, equitable and accessible climate and resilience activities contributing to the city's net zero agenda, also ensuring that activities work towards reducing or removing barriers for disabled people in the transition to net-zero.



## Volunteer Coordinator

- Corstorphine Community Centre
- Part time - 21 hours per week (including occasional evenings and weekends)
- £25,535-£29,575 (Pro Rata)
- 2 Year Lottery Funded
- 5 Kirk Loan, Edinburgh
- Closing 2 February 2023 at 4pm
- Interviews 9 February 2023 (in person)



## Role

Corstorphine Community Centre (CCC) is a charity running a shop and Hub collaborating with other local organisations to provide a range of activities across the local area. We are looking to fill the post of Volunteer Coordinator as soon as possible to work 21 hours per week spread flexibly over the week to meet the demands of the centre and shop.

Main duties will include:

- Developing, implementing and evaluating an ongoing volunteer recruitment campaign
- Developing and maintaining all relevant volunteer information
- Developing, delivering and monitoring an ongoing training programme
- Supporting community-based initiatives to ensure the effective placement of volunteers

To be considered for this opportunity, you will need:

- To be flexible in your approach to work
- Proven experience of recruiting and leading a team

## Application notes

If you are community minded, able to work on your own initiative and have the skills and experience we are looking for, please email in the first instance [admin@ccchub.online](mailto:admin@ccchub.online) for an application form and full information pack. Completed application forms need to be received by 4pm on Thursday 2 February 2023

Interviews will be held on Thursday 9 February 2023 (in person)

For more information about Corstorphine Community Centre check our website [corstorphinecommunitycentre.org.uk](http://corstorphinecommunitycentre.org.uk) or follow us on facebook.

## FUNDING



### MPB Scottish Portrait Award in Photography 2023

The new MPB Scottish Portrait Awards in Photography offers multiple awards for photographers.

Maximum value:	£6,000
Application deadline:	30/04/2023

### Background and Objectives of Fund

Managed by the Scottish Arts Trust, the online photo/video sales company MPB is the new sponsor of the SPA photography awards. The new MPB Scottish Portrait Awards in Photography offers multiple awards for photographers. Entries may be created using any photographic process. The top 25 works in colour/monochrome and the top 25 entries in black and white will be selected for the touring exhibition - going to Edinburgh, Glasgow and Kirkcudbright. Longlisted works will feature in an online exhibition.

Prizes to be awarded include:

- £2,000 MPB Scottish Portrait Award in Photography (colour)
- £2,000 MPB Scottish Portrait Award in Photography (black and white)
- £500 Second prize
- £250 Third Prize

- £500 Young Photographer Award plus MPB voucher worth £250
- £1000 Albert Watson Portrait Prize.

### Who Can Apply and Further Information

Photographers over 16 years born, living or studying in Scotland are eligible to apply. Entry fee is £10 per work and photographers may enter as many times as they wish. Free entry is available for anyone living in Scotland whose immediate family receives any form of income support or universal credit.

The NEW SPA Phone Portrait Awards will run in parallel to the main photography competition, with entries open to anyone over 16 living or studying in Scotland. This is only for images created on a phone. The top entry received each week from 1 January to 30 June will be posted on social media. The top 100 entries will be selected for the online exhibition opening on 1 August and the top prize of £500 will be announced during the MPB Photography Awards on 7 September. The entry fee for the phone portrait award is £5 per work with free entry for anyone living in Scotland receiving income support or universal credit.

Further information on this award is available via the [Scottish Arts Trust website](#).

### How to Apply

The deadline for applications for free entry close on 31 March. Paid for entries close on 30 April. Before entering you are encouraged to read the [award rules](#). Online entry forms are available for free and paid entries from the [Scottish Arts Trust website](#).

### Sylvia Waddilove Foundation UK

**Grants are available to registered charities in the UK for projects relating to education (only relating to organic farming, animal husbandry, veterinary science, animal welfare and animal surgery), the visual and performing arts, medical research, the relief of disability and severe illness, the preservation of buildings of architectural or historical significance and the accommodation of those in need.**

Maximum value:	Discretionary
Application deadline:	02/02/2023

### Background and Objectives of Fund

The Foundation was established in 2001 by the executors of the will of Sylvia Waddilove. Miss Waddilove left a portion of her estate on trust for charitable purposes and had indicated during her lifetime, both the types of charitable purposes she favoured and the way in which her funds should be used. The Foundation uses its discretion to follow those wishes as far as possible. The Foundation provides grant funding in a broad range of themes, from animal husbandry, performing arts, disability and homelessness. The Foundation provides grant funding in the following areas:

- Promotion and education of organic farming and non-domestic animal husbandry and veterinary science.
- The visual and performing arts.
- Medical research.
- The relief of disability and severe illness.
- The preservation of buildings of architectural or historical significance.
- The accommodation of those in need.

Grants are usually in the range of £1,000 to £5,000. Applicants must provide funding from other sources.

### Who Can Apply and Further Information

Support is provided to charities (registered or not), CICs limited by guarantee and registered societies. Funding is available to applicants that meet all of the following criteria:

- The applicant has not previously applied within the last two years.
- The applicant is a registered charity, registered branch, CIO, CIC, a Registered Society, an exempt charity or an unregistered charity with an income of less than £5,000 or an individual if the project relates to medical research.

- The applicant and the beneficiaries benefitting from the project are based in the United Kingdom.
- The applicant has been in existence for at least two years and has a track record of delivering projects.

The level of the organisation's income depends on the project category for which they are applying:

- Promotion and education of organic farming and non-domestic animal husbandry and veterinary science: the applicant's income must be less than £1 million.
- **Visual and performing arts:** the project must involve the organisation's beneficiaries and the applicant's income must be less than £500,000.
- Medical research grant: there are no income thresholds for those applying.
- Relief of disability and severe illness: the organisation income must be less than £500,000 (except for hospices).
- Preservation of buildings of architectural or historical significance: the building must be owned or leased (for a term of 10 years+) to the applicant and their income must be less than £3m.
- Accommodation of those in need: the applicant's income must be less than £3m.

The following exclusions apply:

- Individuals.
- "Friends of" charities.
- General running costs.
- Ongoing or multiple projects.
- Projects delivered in partnership with another charity or charities.
- Workshops, unless the application is for a capital cost or benefit.
- The applicant and beneficiaries are not based in the UK.
- CICs limited by shares and social enterprises.
- Not-for-profit companies that are not charities.
- Social enterprises.

Applications must be in support of a project that is either new or has been running for less than five years. The Trustees welcome applications for projects relating to the following charitable purposes:

#### **Promotion and education of organic farming and non-domestic animal husbandry and veterinary science**

- Capital costs are supported. This includes building projects and the purchase of materials and equipment in relation to an educational project or workshop (but not the salary, professional, publicity or other running costs of the project).

#### **The visual and performing arts**

- Visual arts projects, theatres and theatre productions, and dance, ballet and opera.
- Capital costs only.
- For theatre projects for capital projects which means building work, the purchase of materials or equipment for an educational project, workshop or venue.

#### **Medical research**

Grants for running/revenue and capital costs

#### **The relief of disability and severe illness**

Capital costs only.

#### **The preservation of buildings of architectural or historical significance**

- Capital costs only.
- Preference is given to applications that relate to an innovative architectural design for a building owned by a charity, CIC or Registered Society. This can include the grant of a lease of at least 10 years. (The application does not relate to a religious building or academic institution).

#### **The accommodation of those in need**

- Applications should relate to a capital project only. This includes building projects and the purchase of materials and equipment (but not salary, professional, publicity or other running costs of the project).



Further details on this fund can be viewed via the [Pothecary Witham Weld Solicitors website](#).

### How to Apply

The closing date for applications is midday on 2 February 2023. The Trustees aim to meet quarterly. Applications will open shortly before each scheduled Trustees' meeting. Applicants should monitor the [Trust's webpage](#) for an announcement that applications have opened. Applications will remain open until a sufficient number of applications have been received. The Trustees will aim to provide 48 hours' notice that the application period is to close. However, in exceptional circumstances, the application period may be closed without prior notice. An [online application form](#) is available to complete from the Trust's webpage.

### PRS Foundation - Open Fund for Organisations

**Grants are available for not-for-profit organisations based in the UK to support new music projects led by promoters, large performance groups, talent development organisations, venues, festivals and curators.**

Maximum value:	£10,000
Application deadline:	13/02/2023 <b>(fund opens 16 January)</b>

### Background and Objectives of Fund

The PRS Foundation is the UK's leading independent funder of new music and talent development across all genres. The Foundation works to stimulate and support the creation and performance of new music across the UK. The Foundation's Open Fund for Organisations offers grants to promoters, large performance groups, talent development organisations, venues, festivals and curators that promote and encourage new music. It supports high-quality new music projects that have tangible musical outcomes and a clearly defined start and end date. The funding is intended to help support, sustain and promote the growth of the new music infrastructure in the UK. The Foundation's funding priorities are:

- To support the creation and performance of outstanding new music in any genre.
- To enable the UK's most talented music creators to realise their potential.
- To inspire audiences at a local, regional, national and international level.

Organisations may apply for up to £10,000. Administration costs relating to the project can normally be funded to a maximum of 15% of total budget.

### Who Can Apply and Further Information

Applications to the Open Fund for Organisations are accepted from any not-for-profit organisations based in the UK with an eligible project. This includes:

- Organisations that are limited by guarantee and/or a registered charity.
- Promoters.
- Talent development or composer development organisations.
- Festivals.
- Venues.
- Curators.
- Orchestras and large ensembles.
- Community interest companies (CICs).
- Non-music organisations including local authorities, museums, etc.

Eligible organisations can support one or more music creator(s). If the organisation's selected music creator(s) has received support in the last 12 months - whether directly as a music creator or indirectly via an organisation - the Foundation may prioritise other projects. The following are considered by PRS Foundation to be music creators:

- Songwriters.
- Composers.
- Artists, bands, producers and performers who are writing their own music or commissioning other songwriters or composers.

Support through any of the Open Fund schemes is unavailable for:

- Individuals in full-time education, unless an exception is made by the Grants Team.
- Under 18s, unless represented by an adult with a valid DBS check.
- Those resident outside of the UK.
- Those without a track record of more than 18 months.
- Projects where the lead composer/songwriter is a member of another Performance Rights Organisation (ie UK-based music creator must either be a member of PRS or should be in a position to join).
- Companies limited by shares (although considered on a case-by-case basis).
- Projects that contain no element of live performance or creation.
- Technology projects (unless they contain a significant aspect of new music creation).
- The purchase of vans and cars.
- Bursaries, tuition/education costs or scholarships.
- Capital projects (eg building work).
- Any project raising funds for another charity.
- Buying equipment.
- Building a studio.
- Organisations or projects that have been running for less than 18 months.
- Music creators who do not have a track record of 18 months or more.
- Retrospective activity (ie projects that have already taken place).
- Activity that falls before our decision date.
- Organisations based outside the UK.
- Music creators based outside of the UK - projects can involve international music creators but such costs must clearly be covered elsewhere and the Foundation prioritises UK-based creators.
- British music creators no longer permanently resident in the UK.
- Composers and songwriters who are members of other performance rights collection societies.
- International tours/international activity unless part of a majority-UK based project.
- Radio stations/broadcasting costs.
- Start-up companies or record labels.
- A roster of artists on a record label or management company.
- Living costs and salary costs.
- Core funding.

The Open Fund for Organisations supports high-quality new music projects and not programmes. Projects must involve the creation, performance and promotion of new music and enable songwriters, composers, artists, bands and performers of all backgrounds to develop creatively and professionally. The Foundation will prioritise expenditure that will have a direct and obvious impact on music creator development. Projects must fit with all three of the Foundation's funding priorities:

- **To support the creation, performance and promotion of outstanding new music in any genre** - The Foundation is particularly interested in the quality of the music.
- **To enable the UK's most talented music creators to realise their potential** - The Foundation is interested in how projects will develop the songwriters and composers involved and is committed to supporting UK-based songwriters and composers of all backgrounds.
- **To inspire audiences** - Applicants will be asked to outline who they are reaching and how. This includes audiences at a local, regional, national or international level.

Funding includes support of:

- Creation of new music.
- Music creator fee (to cover their time and work).
- Touring and live performances/programming featuring new UK music.
- Commissions of new music by UK-based creators.
- Music creator residencies.
- Recording and release.
- Exciting community projects involving high-quality music creators.
- Promotion and marketing (when there is also an element of creation and/or performance).

Support for and increased prioritisation of the following areas will be considered (on a case-by-case basis):

- High-quality and innovative live broadcast or pre-recorded online content, which adheres to social distancing rules and is within government guidance at the time.
- Innovative ideas for undertaking high-quality performances in new ways that will reach audiences.
- Expenditure which will have a direct and obvious impact on music creator development.
- Projects which involve repeat/multiple performances or clearly show potential for more performances by outlining future performance plans (one-off performances will only be funded in exceptional circumstances).

Further information on this fund can be viewed via the [PRS Foundation website](#).

### How to Apply

The fund will open for applications on 16 January 2023 and close to applications on 13 February 2023 (6pm). The Open Fund for Organisations has a one-stage application process. Applicants must provide details about the project, how it will benefit the creators involved, the activity timeline and balanced budget in one application form. The online application form can be found on the [Foundation's website](#).

### PRS Foundation - Beyond Borders

**Grants are available to support co-commissions and performances of new musical works by UK not-for-profit organisations in a framework which guarantees live performances in at least three different countries.**

Maximum value:	£15,000
Application deadline:	18/09/2023 <b>(fund opens on 5 June)</b>

### Background and Objectives of Fund

PRS for Music Foundation is the largest funding organisation in the United Kingdom that is specifically targeted at the support of new music. It is an independent charitable organisation whose overall objective is to increase the public's understanding and appreciation of new music and to encourage, promote and sustain music creation and its performance of all genres and at all levels of activity. The Foundation's Beyond Borders programme supports the creation, touring and promotion of innovative and high-quality new music across all genres and encourages engagement with audiences across England, Scotland, Wales, Northern Ireland and the Republic of Ireland through multiple performances and digital activity. The aim of the programme is to stimulate collaboration between organisations and bands or ensembles in England, Northern Ireland, the Republic of Ireland, Scotland and Wales. It enables music creators to produce exceptional new material to be performed in at least three of these countries, raising the profile and benefits of co-commissioning, co-producing and touring to a broad range of audiences. Grants of up to £15,000 are available. The programme supports up to 8-10 projects per year. Beyond Borders funding is expected to contribute to rather than support full project costs. Budget projections should include other cash income, in addition to any in-kind support.

### Who Can Apply and Further Information

Applications will be accepted from not-for-profit music organisations based in the United Kingdom. The following eligibility criteria apply:

- Applications must consist of at least three partners, each from a different UK/Ireland region.
- There must be a lead partner for each application comprising a festival, venue, promoter or performing group with organisational capacity and infrastructure to deliver the proposed project.
- There must be a minimum of three live performances between the decision date and the end of the following calendar year, reaching audiences in at least three UK/Ireland regions.
- Collaborations can involve co-commissioning new works or co-promoting music written by UK/Ireland-based music creators during the past five years.
- Larger partnerships, incorporating additional international organisations, are encouraged.

Individuals are not eligible to apply.



All Beyond Borders projects are expected to have a significant element of live activity. Grants are intended to support projects that include repeat performances of music written in the past five years, new commissions and recordings. Projects should demonstrate the following:

- Innovation and quality within the music, programming and performances, and potential for national/international profile.
- Strength and depth of collaboration between cross-border organisations/ensembles/bands and potential for partnership legacy.
- Potential audience reach and impact and the strength of plans for public engagement.

Recordings and digital activity are eligible for support but cannot form the majority of the funding request.

Further information on this fund can be viewed via the [PRS Foundation website](#).

### How to Apply

The fund **will open for applications on 5 June 2023** and close to applications on 18 September 2023 (6pm). Guidance notes and the online application form can be found on the [PRS Foundation website](#).

## Resilient Theatres: Resilient Communities Grant Programme

**Capacity building grants are available to support the restoration, reopening or revitalising of community theatres on the Theatres Trust's Theatres at Risk Register.**

Maximum value:	£20,000
Application deadline:	10/02/2023

### Background and Objectives of Fund

The Resilient Theatres: Resilient Communities Grant Programme has been launched by the Theatres Trust to support theatres at risk. It is supported by the National Lottery Heritage Fund, the Swire Charitable Trust and the Pilgrim Trust. The scheme aims to enrich the knowledge, skills and confidence of the cultural heritage sector, but specifically communities considering or already taking over a theatre building, thereby reducing the threat to at-risk theatres and leading to greater sector resilience. This grants programme is for theatres on the trust's Theatres at Risk Register, and the community and campaign groups that support them. Grants are to help groups to acquire the skills and knowledge needed to restore and reopen these theatres. The fund will not support the capital works themselves

Grants of between £5,000 and £20,000 are available (although it is likely the majority of grant awards will be up to £10,000). Match funding is not required; however, should a project cost exceed the Resilient Theatres: Resilient Communities grant proof of partnership funding will be required.

### Who Can Apply and Further Information

To be eligible, organisations must have UK charitable or not-for-profit legal structure to apply. Local authorities are also eligible. It is not necessary for recipients to own or lease the theatre building, however it is necessary to have a specific ambition for the removal of the building from the Theatres at Risk Register through the restoration/reopening of the venue. Permission from the owner to undertake the project is also required, where necessary.

The type of support that might be funded includes:

- Viability studies and options appraisals.
- Building condition surveys and structural reports.
- Business planning and fundraising strategies.
- Economic impact studies.
- Governance reviews.
- Heritage statements.
- Audience development plans.
- Archival research or collecting people's memories (oral history collection) or ephemera related to the theatre.

Projects will be prioritised according to:

- The urgency of the project.
- Being 'at risk' (ie on the Theatres at Risk Register) and the extent to which the grant will make a significant difference to promoting the better protection of the theatre - those that are considered to have the most impact in realising a fundamental step towards removal of the theatre from the Theatres at Risk Register will be prioritised.
- Being of heritage value, including whether the building is formally listed or locally listed.
- Being in an area of economic deprivation.
- Of community value - demonstrating there is significant local support for the building.
- In danger of becoming at risk.

Capital works are not eligible.

Further details on this fund can be viewed via the [Theatres Trust website](#).

### How to Apply

The deadline for applications is 10 February 2023 (12 noon). Applications should be made by email using the application form template available to download from the [Theatres Trust website](#). Applicants will be notified of the outcome of their application by mid-April 2023.

### BFI Future Takes

**Funding is available to emerging UK filmmakers to support the creation of ambitious and original short form work.**

Maximum value:	£90,000
Application deadline:	13/02/2023

### Background and Objectives of Fund

The Future Takes programme is provided by BFI in partnership with Film4. The funding is intended to support creative teams to make films that can gain major recognition and open up new opportunities for the filmmakers involved, serving as a realistic stepping-stone towards a first feature or long form commission. The programme will fund approximately seven projects, with grants of between £35,000 and £90,000 available.

### Who Can Apply and Further Information

Applications will be accepted from teams of writers, directors and producers based in the UK to support the production of higher-budget live action, short form film work. The following are not eligible for funding:

- Core costs for day-to-day running of a production company not associated with the film project.
- Activity that is already specifically supported by another external source of funding.
- Costs incurred prior to an offer of funding from BFI.

The programme supports the production of scripted live action work or hybrid documentary involving scripted or dramatised elements. The funding is intended to cover all costs incurred to deliver a finished film with an intended length of a maximum 25 minutes.

Further information on this fund can be viewed via the [BFI website](#).

### How to Apply

The deadline for applications is 13 February 2023. Guidance notes and the online application form can be found on the [BFI website](#).

## Vaughan Williams Foundation

**Grants are available to support projects that further the knowledge and understanding of the life and music of Ralph Vaughan Williams and the work of Ursula Vaughan Williams; and to support the performance, commissioning or recording of music by professional British/Irish composers active in the last 100 years.**

Maximum value:	Discretionary
Application deadline:	02/05/2023

### Background and Objectives of Fund

The Vaughan Williams Foundation (VWF) is a grant-making charity established in 2022, 150 years after the birth of the composer Ralph Vaughan Williams. It brings together the two charities originally founded by Ralph (RVW Trust) and his wife Ursula (Vaughan Williams Charitable Trust) and is funded by the royalties earned from RVW's music. Funding awarded by the Foundation is intended to honour Ralph Vaughan Williams' desire to support his fellow composers, and to support projects seeking to make his own work widely accessible to the general public. Whilst the Foundation does not state minimum or maximum grant values, it is anticipated that the majority of awards will be under £3,000. Larger grants will only be given for significant projects which very closely align with the Foundation's objectives. In all cases, the Foundation is unlikely to contribute more than 50% of the total project costs. Applicants are usually required to provide at least 50% of their total project costs from other sources.

### Who Can Apply and Further Information

The following eligibility criteria apply:

- Applications to support projects by individuals will be accepted from composers of British or Irish nationality, or who have been resident in the UK for a minimum of five years.
- Applications from organisations are expected to demonstrate how the public will be able to access the project and its outcomes.

The following are not eligible for funding:

- Performances of composers currently in higher education.
- Performances by student ensembles.
- Retrospective project costs.

Grants can be used to support the following projects and activities:

**Support for professional composers** - Under this funding strand the Foundation offers support towards the following:

- The performance, commissioning or recording of music by professional composers active in the last 100 years who have not yet achieved a broad national or international reputation, or by composers entering the profession. These grants will generally only be awarded for notated music, scored for live performers. (Repertoire which combines electronics with live performers will be considered.)
- Projects or organisations in the UK which create developmental opportunities for composers or which promote public knowledge and appreciation of British or Irish music of the last 100 years.

**The work of Ralph and Ursula Vaughan Williams** - Under this funding strand the Foundation offers support towards the advancement anywhere in the world of the knowledge, understanding and appreciation of the life and music of Ralph Vaughan Williams, and of the work of Ursula Vaughan Williams, particularly:

- The performance of works by Ralph Vaughan Williams, either where they are rarely performed (particularly the stage works); or where the context is special, such as local music societies or festivals; or performances in territories where the music of RVW is seldom performed.
- The recording or filming of neglected RVW works.
- The publication of unpublished works of RVW or the origination by existing publishers of new scores and performing material for works already published.
- Research into the music of RVW.
- The acquisition by public institutions of RVW research material, such as autograph manuscripts or original correspondence.

- Projects or resources that educate the public about the life or work of RVW or UVW and contribute to their legacy.

Further details on this fund can be viewed via the [Vaughan Williams Foundation website](#).

### How to Apply

Guidance notes and the online application form can be found on the [Vaughan Williams Foundation website](#). The Foundation has three deadlines annually for funding applications. Each funding round is for projects which will be delivered at least three months after that deadline. The 2023 deadlines are:

- 2 May 2023
- 4 September 2023
- 4 January 2024.

### John Ellerman Foundation

**Grants for charities in the UK whose work in the Foundation's priority areas of arts, environment or social action has impact across the whole of the UK.**

Maximum value:	Discretionary
Application deadline:	None specified

### Background and Objectives of Fund

The Foundation was established in 1971 as a generalist grant-making Trust following the death of Sir John Ellerman. The Foundation aims to advance the wellbeing of people, society and the natural world. Support is available for charitable work in the arts, environment and social action. The Foundation is keenly aware of the connections between these areas and their effects on each other and on people's health and happiness. The Foundation funds organisations whose work has reach and significance across the UK and supports charities that have a national footprint. The Foundation supports people, society and the natural world by focusing on the arts, environment and social action as these areas can make an important contribution to wellbeing. The minimum grant available is £10,000. There is no maximum limit. Most grants are for two or three years. The Foundation normally supports core funding but grants for projects are also available. Grants can be used as matched funding. Please note that demand for funds is high.

### Who Can Apply and Further Information

Funding is available to registered, excepted or exempt charities that are doing work that has a national footprint or a wide reach, such as working in more than one country, region or county. Occasionally organisations that work locally may receive funding if the work has national significance through good potential for replication or being rolled out on a larger scale. Organisations should have an income of between £100,000 and £10 million and be able to demonstrate:

- Strong governance and management - that the board is engaged, people well qualified and well led, the organisation has a thorough understanding and oversight of finances at all levels, the organisation's reporting is thoughtful and the organisation is aware of its own strengths and weaknesses.
- Effectiveness and impact - that the organisation has a good understanding of the needs being met and how best to tackle them, awareness of how the organisation relates to and complements other agencies, effective systems to monitor and review progress, a culture of always trying to do better, an eye on how to prevent problems recurring and are alert to opportunities to have a wider impact.
- Good use of volunteers - from professionals to local communities.
- Partnerships - formal collaboration and networking to help the organisation understand the issues it addresses.

Preference is given to smaller niche national charities which shine a light on a particular concern or area of interest.

The Foundation does not consider applications from organisations that:

- Have applied unsuccessfully within the previous 12 months.
- Have had a grant which ended less than 12 months ago.



- Focus on a single medical area, such as an individual disease, organ or condition.
- Are hospitals, hospices, schools, colleges or universities, unless the application is from a leading university specialist unit.

Grants are not made to or for any of the following purposes:

- Work that benefits only one location.
- Individuals, including student grants or bursaries.
- General and round-robin appeals.
- Capital developments and individual items of equipment.
- Promotion of religion or places of worship.
- Individual campaigns.
- One-off events, such as conferences, trips, seminars, single commissions, productions or festivals.
- Arts organisations and projects whose main focus is supporting and developing individuals.
- Leisure or individual holiday schemes.
- Sport, where this is the core of the organisation's activities.
- Education, such as initiatives linked to the curriculum, arts or environmental educational projects.
- Medical research or treatment, including drug and alcohol rehabilitation services.
- Prisons and offenders.
- Animal welfare, captive breeding and animal rescue centres.
- Learning and participation in the arts, where this is the primary focus of the application.

Support is available for core funding, projects and programmes, such as staff salaries, training and expenses, running costs, monitoring/evaluation, communications and digital innovation.

The Foundation funds three categories and aims to allocate it in the following way:

**Arts** - Funding is available in the following areas:

- Regional museums and galleries - funding is available to strengthen these institutions, with a focus on using curatorial skills to enhance collections for public benefit.
- The performing arts, mainly theatre, music and dance. Support may be available for other performing art forms if the organisation and its work are exceptional.

In the performing arts, organisations should demonstrate some of the following:

- Organisations with new or original work.
- Track record of producing excellent work.
- Exciting, fresh and imaginative ideas and models of working.
- Integration of emerging talent and artist development into the artistic programme of work (i.e. developing an individual is not the organisation's main or sole focus).
- An understanding of actual and potential audiences and how the artistic plans relate to them.
- Regional work that is valued and recognised nationally and internationally.

**Environment** - Funding is available in the following two areas:

- **The Ocean:** protection, restoration and sustainable use of the ocean through effectively and equitably managed protected areas; ocean recovery; engaging coastal communities; reducing overfishing and addressing other harmful effects of human activity on, and in the ocean, such as pollution.
- **Land and fresh waters:** building healthier ecosystems in urban or rural environments, through effective and sustainable management including implementing evidence-based interventions conservation and restoration; connecting fragmented habitats; and landscape-scale work to protect and restore places of special significance. Work to reduce or prevent the damaging impacts of human activities, particularly climate change, and air, land and water pollution from chemicals and other pollutants are also funded.

Priority will be given to work in UK waters but consideration will be given to Overseas Territories (on land and sea) from UK-based NGOs with local partners. Organisations should demonstrate some of the following:

- Strive to understand the natural environment.

- Understand both the significance of habitats for human wellbeing, as well as the impact of people on nature.
- Look for sustainable solutions by ensuring that the livelihoods and economic needs of local communities are integrated into their thinking and strategy.
- Work collaboratively.
- Tackle causes as well as symptoms.
- Undertake an evidence-based approach.

**Social Action** - Funding is available in the following areas:

- Improve systems and institutions through policy, advocacy and campaigning:
  - Building bridges between people and the establishment by creating opportunities for contact and dialogue.
  - Enabling those with experience to have a voice.
  - Ensuring professionals/organisations listen and respond.
  - Campaigning for improving policies, practices and systems.
- Actively involve those with personal experience of the issue tackled:
  - Bringing together those with direct personal experience of a problem and those who have expertise and insight from working alongside them.
  - Finding new ways to draw on experiences and skills, engaging them in identifying and working on change.
  - Priority will be given to proposals that tackle the greatest barriers created by disadvantage, divisions and inequality.

Priority is given to charities that:

- Are rooted in practical experience, rather than working exclusively on policy.
- Understand the need to build people's confidence and skills so they are ready to engage with others.
- Value, promote and learn from the experience of those they support.
- Engage with the unpopular or difficult cause.
- Seek to tackle causes as well as symptoms.

Further information on the fund can be viewed via the [John Ellerman Foundation website](#).

### How to Apply

Applications may be submitted at any time. Decisions are made regularly throughout the year. Applicants should first refer to the guidelines, the eligibility checklist, and frequently asked questions before starting the application process via the [Foundation's website](#). The Foundation operates a two-stage application process. Applicants must create an online account and apply via the portal at the website. The first-stage application should include:

- A description of what the organisation is seeking funding for, on no more than two sides of A4, including:
  - A brief summary of the organisation and relevant track record.
  - How the proposal meets requirements that the work is of a national significance.
  - What the organisation would like funding for and why it is well placed to do this work.
  - How the proposal fits the Foundation's guidelines.
- A copy of the organisation's most recent annual accounts. If the accounts show a significant surplus or deficit, high or low reserves, these should be explained briefly. If the year-end date of the accounts is more than 10 months old, applicants should include the latest management accounts.

If the proposal is recommended to the second stage, a more detailed application will be required. A decision at the second stage is usually made within three months.

### The City of Edinburgh Council – Culture and Communities Committee – Business Bulletin

Should you be interested, you can catch up with all of the Culture & Wellbeing Service's latest news via its [Culture Bulletin](#) (latest version available - 13 December 2023). These Bulletins are produced for each scheduled Culture and Communities Committee meeting and are available to download via the [Council's website](#).

**Although I try to filter events that have passed, cancelled or changed, please check dates and times with organiser, thanks, Elaine**

Please email me at [elaine.lennon@edinburgh.gov.uk](mailto:elaine.lennon@edinburgh.gov.uk) if you have any community news to share. Preferred format is a link to your website or a jpeg or word docume, and nt if possible, and I would ask you to give me as much notice of events as possible to enable local people to attend if interested. We will only use any data to provide you with updates associated with the North West Locality and your data will not be shared. This is in line with the [City of Edinburgh Council's Privacy Notice](#). You can opt out at any time by [using this link to unsubscribe](#).